

We invest in the Orange County and High Desert's health.



Bringing our Mission to life

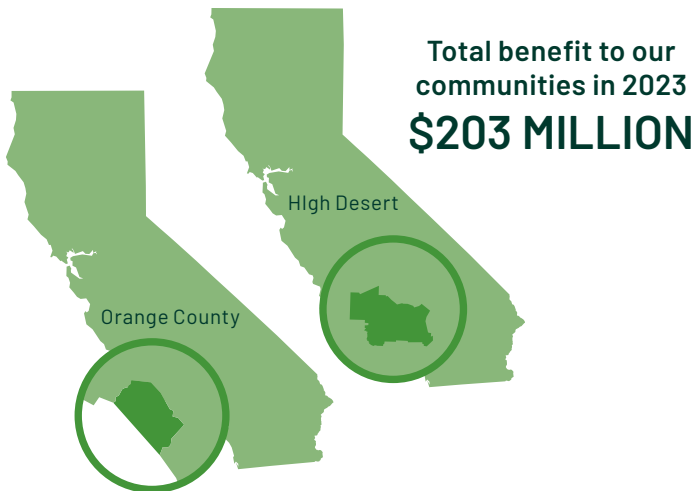
At Providence, we are dedicated to improving community health and reducing disparities in the Western U.S. and beyond. Called by our Mission, we are steadfast in serving all, especially those who are poor and vulnerable.

Taking action on health challenges

To achieve our vision of health for a better world, the Providence family of organizations identifies community health needs and invests in programs and meaningful solutions that meet the diverse needs of our neighbors. Alongside local partners, we build stronger, healthier communities by focusing on areas of lasting impact:

- Foundations of health
- Removing barriers to care
- Community resilience
- Innovating for the future

Our longstanding commitment to identify needs and provide community benefit is an essential way we live our Mission each day.



\$15 MILLION
Community health improvement and strategic partnerships



\$279,000
Health professions education and research



\$4.4 MILLION
Subsidized health services



\$15.5 MILLION
Free and discounted care for the uninsured and underinsured



\$167.4 MILLION
Unpaid cost of Medicaid and other means-tested government programs

* Data is consolidated based on unaudited financial reporting. The numbers include home and community care investments and joint ventures by percentage ownership.

Community investment in action

Providence St. Mary Medical Center joins community partners to tackle food insecurity



The Victorville Wellness Center.
Photo credit: City of Victorville

Access to healthy foods is a nationwide issue and is especially challenging for residents in San Bernadino's High Desert. Characterized by high poverty rates and limited fresh food availability, this region is referred to as a "food desert."

Providence St. Mary Medical Center has partnered with San Bernardino County's CalFresh Healthy Living Nutrition Education Program, and other primary care providers, to assist individuals facing food insecurity at the Symba Center, in the Victorville Wellness Center.

"This partnership allows us to screen individuals for food insecurity during their medical visits," said Shawn R. Smith, PharmD, co-founder and chief executive officer at the Symba Center. "We can provide comprehensive nutrition education and guide them towards resources like food pantries. Additionally, we offer free, on-site nutritional classes – teaching individuals how to cook nutritious meals that are budget friendly."

Working with a community partner to provide accessible mental health and psychiatric care



St. Jude Neighborhood Health Centers offers mental health and psychiatric care and provides essential support to the Orange County community.

In partnership with Providence Orange County hospitals, St. Jude Neighborhood Health Centers offers thousands of underserved Orange County residents compassionate mental health and psychiatric care they would have difficulty finding elsewhere.

The behavioral health care team comprises multiple therapists and counselors – and a psychiatrist who provides culturally appropriate care in Spanish and English. Of the nearly 3,600 patients who received mental health or psychiatric care through this program in 2023, the vast majority were Spanish speaking.

Telehealth care also is provided by St. Jude Neighborhood Health Centers. In 2023, the number of virtual visits were nearly double that of in-person visits at the Anaheim, Fullerton and Orange clinics.

Patients can also receive medical, prenatal, dental and vision care at St. Jude Neighborhood Health Centers – resulting in higher-quality, uninterrupted and whole person care.

Lime green benches provide safe spaces for conversations about mental health



Though mental health is increasingly understood as essential to well-being, many people still encounter shame or dismissal when talking about mental health and seeking help.

To destigmatize mental health, Providence Mission Hospital, Providence St. Joseph Hospital and Providence St. Jude Medical Center have come together with community organizations to install lime green benches across Orange County.

Nearly 30 benches have been painted, including the first located at Providence Mission Hospital, Providence St. Joseph Hospital and Providence St. Jude Medical Center.

Cecilia Bustamante Pixa, interim senior director of community health, Providence Orange County/High Desert, with a green bench at Providence St. Joseph Hospital.

“By tapping the expertise of community partners, we focus on reducing health disparities as we address our neighbors’ challenges.”

— LAUREEN DRISCOLL, MBA, MSN, RN
Chief Executive
Providence South Division

“This partnership allows us to screen individuals for food insecurity during their medical visits. We can provide comprehensive nutrition education and guide them towards resources like food pantries.”

— SHAWN R. SMITH, PHARM D
Co-founder and chief executive officer at the Symba Center