

We invest in Montana's health.



Bringing our Mission to life

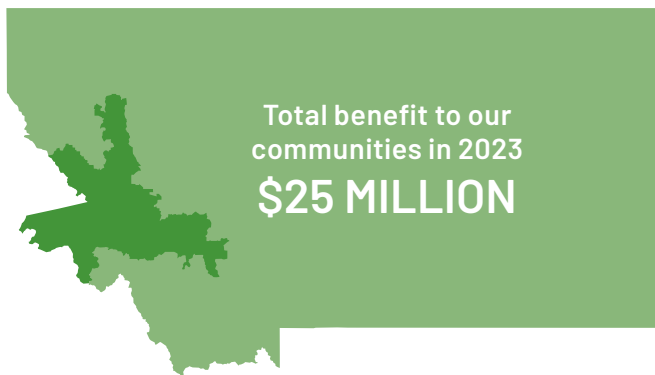
At Providence, we are dedicated to improving community health and reducing disparities in the Western U.S. and beyond. Called by our Mission, we are steadfast in serving all, especially those who are poor and vulnerable.

Taking action on health challenges

To achieve our vision of health for a better world, the Providence family of organizations identifies community health needs and invests in programs and meaningful solutions that meet the diverse needs of our neighbors. Alongside local partners, we build stronger, healthier communities by focusing on areas of lasting impact:

- Foundations of health
- Removing barriers to care
- Community resilience
- Innovating for the future

Our longstanding commitment to identify needs and provide community benefit is an essential way we live our Mission each day.



\$1 MILLION
Community health improvement and strategic partnerships



\$7 MILLION
Health professions education and research



\$11.5 MILLION
Subsidized health services



\$5 MILLION
Free and discounted care for the uninsured and underinsured

* Data is consolidated based on unaudited financial reporting.

Community investment in action

Riverwalk Crisis Center fills a behavioral health care gap in western Montana



The lobby of the Riverwalk Crisis Center, a 24/7 behavioral health center that supports up to 16 adult patients at a time.

The Riverwalk Crisis Center is a 24/7 behavioral health center created to reduce unnecessary visits to emergency rooms or preventable incarceration. Working closely with Providence’s mobile crisis support team and first responders, Riverwalk helps people find the services they need, including resources such as referrals to other health service providers, housing and food assistance and transportation.

Ann Douglas, Ph.D., the director of the Riverwalk Crisis Center, said she feels grateful to see firsthand the impact that programs like Riverwalk have on families in Montana.

“Our first guest at Riverwalk came to us a few times. I recently got a call from them, saying they’re in a safe place and thanking us for being there for them,” Douglas said. “That’s why we’re here.”

Mobile crisis response unit provides students with mental health support



Providence social workers Nicole Gratch and Sandy Cummins discuss children who are receiving help from the Youth Crisis Diversion Program.

In 2023, Providence launched a no-cost mobile crisis response unit to provide mental health services to three middle schools. Nicole Gratch, LCSW, a social worker with Providence who is the mobile unit’s therapist, de-escalates crisis situations and helps students secure services. By reaching families through the school system, the program provides an easy access point for families who are unfamiliar with or don’t have access to behavioral health services.

In 2023, Gratch and Sandy Cummins, the Youth Crisis Diversion Program lead, responded to 106 calls, serving 53 students at three middle schools and one high school, and Cummins supported 118 families in their homes.

Gratch said learning that clients are thriving after receiving services is the most rewarding part of her job, but more work is needed to create equitable access to mental health support.

“There’s a great need to support kids experiencing substance use,” Gratch said. “We need to fill more gaps and create better connections to support, especially for marginalized populations.”

“ Our partnerships within the community have enabled us to move forward with these needed resources. We continue to serve as a vital safety net for those in need. ”

— WILLIAM CALHOUN
Chief Executive
Providence Montana

“ Our first guest at Riverwalk came to us a few times. I recently got a call from them, saying they’re in a safe place and thanking us for being there for them. That’s why we’re here. ”

— ANN DOUGLAS, PH.D.
Director of Riverwalk Crisis Center