

President of the Professional/Medical Staff REPORT

Michele DelVicario, MD, FACC, FRCP (C)

High Quality Care

This goes beyond safe delivery of care - beyond effective, timely quality of care and beyond efficient, equitable delivery of care.

Beyond compassion that incorporate up to date evidence-based delivery of care. Most importantly, the care we delivered has to encompass the idea of shared decision making with the patient and just as importantly, with the family and care givers input.

This should also aspire to render whole person care with attention to personal preferences and giving the patient and family sovereignty over the decision making pertaining to illness and dying. Special care and consideration should be given to values, preferences and priorities of the person and family who entrusted us with their health needs.

Thank you for your attention and understanding.

IN THIS ISSUE

- 1 President of the Professional Staff Report
- 2 From the CMO Desk
- 3 Department of Radiology
- 4 Journey of LCM Sisters
- 5 MEC Approvals
- 6 Welcome Medical Staff Farewells
- 7 Featured Art Piece
- 8 Featured Art Piece Did you know...

Michele Del Vicario, MD
 President of Professional Staff

Richard Glimp, MD
 Chief Medical Officer

Thomas E. Lowe, MD
 President-Elect

Amir Kaviani, MD
 Immediate Past-President

Midhat Qidwai, MD
 Secretary/Treasurer

Celia Hogenson-Kida, MBA, CPMSM
 Director, Medical Staff Services



From the CMO Desk

Richard Glimp, MD - Chief Medical Officer

October and November brought a new challenge to our facility- the possibility of caring safely for an Ebola patient. While we have dealt in the past with the complexities that emerging infections (HIV,SARS, others) bring to a hospital, none threatens the safety of our staff and physicians as extensively as Ebola. Not only are we dealing with a potentially lethal virus, but additionally with the hysteria that surrounds it. There were many lessons to be learned.

Thankfully, the threat has now subsided. The epidemic has slowed in West Africa. The CDC has placed many measures in place to identify and track potential cases coming into this country, has firmed up the recommendations to protect caregivers, and has identified receiving hospitals for any cases that might occur. Presently there is no Ebola in the US, and those individuals with possible exposures here are now coming out of quarantine. And the media has finally backed off on their constant Ebola reports.

Our infection prevention team has worked hard to make sure that, should an Ebola case somehow present here, we are ready. Through the tireless work of Jamie Jolly and her team, the drills have been completed, the education done, the supplies obtained, the treating team identified, and the contingencies addressed. The lessons learned can additionally be carried forward to deal with the next threat. I want to recognize all the hard work the many individuals have done to make our institution safe and to ready us to give the best care possible.

Department of Radiology - 2014 In Review

In addition to surviving the EPIC implementation, 2014 has been a very busy and productive year for our Imaging Department. We have been hard at work making changes that we feel will facilitate your interactions with our department and enhance your patients' imaging experience.

We are very grateful to the administration for upgrading our equipment here at the hospital. We have installed the most powerful CT scanner on the market. The Toshiba 320 slice Aquilion I CT scanner has helped us reduce dose and increased patient throughput. We will be offering CT coronary angiography and coronary calcium screening beginning in November.

We are also very excited to offer new services on our recently installed Siemens 3 Tesla MRI scanner. These include prostate imaging (without having to use an endorectal coil), functional cardiac studies, and tractography utilized in pre-surgical planning and evaluation of white matter diseases.

Our new Phillips RF room will greatly improve our fluoroscopy capabilities for image guided procedures.

Additionally, the recently acquired TeraRecon Advanced Medical Visualization software improves the 3-D and 4-D image postprocessing.

To improve capacity we have opened additional ultrasound slots and decreased our ultrasound-guided biopsy backlog to less than one week. We are committed to continue to improve standardization in our reporting and have created many reporting templates to address specific areas of interest. In addition, streamlining our patient registration process has been a major focus and we are committed to less than 24 hour report turnaround time for our outpatient studies.

The Women's Imaging Center has increased capacity for mammograms with a change in scheduling. We now offer evening appointments three nights per week.

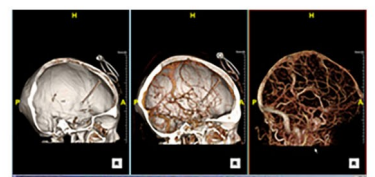
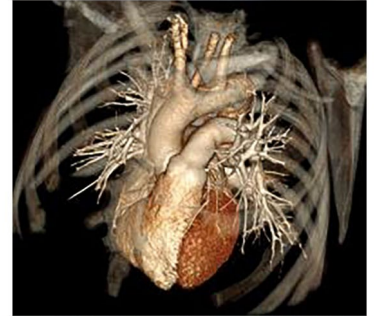
The Women's Imaging Center has hosted a series of eight community lectures to teach patients about early detection of breast cancer.

A multidisciplinary breast cancer advisory board, which includes surgeons, medical oncologists, radiation oncologists, pathologists, and radiologists was assembled to improve the timeline for newly diagnosed breast cancer patients from biopsy to first treatment. A survivorship nurse navigator role was also created for our cancer patients to receive a comprehensive care plan at the conclusion of their treatment.

Lastly, please let me know if we can do anything to improve our service to you and your patients.

Thank you for the opportunity to be your imaging experts.

Robert A. Kolanz, MD



Journey of the Sisters of Little Company of Mary



In 1877, Mary Potter, a young English woman, founded the order of Little Company of Mary, a congregation dedicated to caring for the sick and the dying. The sisters share a deeply-rooted respect for the dignity of each human being and are devoted to Mary, the mother of Jesus. This devotion is exemplified in the congregation's name, which derives from the small group of faithful women, a "little company," who kept Mary company at the foot of the cross on Calvary.

Mary Potter was 30 years old when she established her first small mission to care for the sick of Hyson Green, outside Nottingham, in her native England. From this first mission in an old stocking factory, the ministry has grown into a worldwide network including missions in numerous countries including here in the American province.



The Little Company of Mary ministry was primarily European-based until the sisters in Rome nursed the wife of a Chicago businessman. Mr. Charles Mair, impressed by the kindness and skill of the sisters, offered to underwrite their journey and provide a convent if the sisters would come to America. And they did.

In June of 1956, Cardinal McIntyre invited the Sisters to come to Torrance and build a hospital. A 10-acre site was given to them by a corporate grant deed from the Archdiocese of Los Angeles.



Approved at November 13, 2014 Board

POLICIES AND PROCEDURES

CRITICAL CARE P&Ps

Respiratory Care Services: Capnography: Exhaled CO₂ Monitoring
 Respiratory Care Services: Operating Procedures for IL ABG Analyzers
 Respiratory Care Services: Staffing
 Patient Rights/Org. Ethics: Rapid Withdrawal of Ventilator Support in Anticipation of Death, Guidelines for
 Patient Care: Crash Cart Policy (Adult)
 Patient Care: Code Blue
 Patient Care: Brain Death, Determination of

FAMILY MEDICINE DEPARTMENT P&Ps

Management of Skin Related to Urinary and Fecal Incontinence - POST EPIC

INFECTION BLOOD AND PHARMACY P&Ps

Medication Reconciliation - Pharmacist Protocol
 Look-alike/Sound-alike Drugs
 Sterilizing Patient Breast Pump Parts, Infant Feeding Bottles and Nipples for In-Patients
 Cervical Ripening
 Preparation and Storage of Infant Feedings
 Hand Held Nebulizer Therapy
 Rapid Withdrawal of Ventilator Support in Anticipation of Death, Guidelines
 Prion Disease Management Guidelines
 Employee Food and Drink in Patient Care Areas
 Sterile Supplies (Event Related Outdating System)
 Influenza Vaccination (Informal)

OB/GYN DEPARTMENT P&Ps

Nursing/Women's Health: Standard of Care - Women's Health (revised)
 Nursing/Women's Health: Trial of Labor after C-Section Protocol, with TOLAC Protocol Requirements and TOLAC Consent (revised)

PEDIATRIC DEPARTMENT P&Ps

Inter-Facility Neonatal Transports
 Evacuation Plan, NICU
 Standards of Patient Care - Well Newborn

RN/MD INTERDISCIPLINARY PRACTICE COMMITTEE P&Ps

Standards of Practice, Progressive Care Unit
 Scope of Service: Progressive Care Unit (PCU)

SURGERY DEPARTMENT P&Ps

Scheduling Patient for Surgery (revised)

FORMS

INFECTION BLOOD AND PHARMACY

Assumption of Liability Physician

MEDICINE DEPARTMENT

Department of Medicine Privilege (revised)

Department of Medicine Rules and Regulations (revised)

RADIOLOGY DEPARTMENT

Spine Center and Pain Management - Order Form

SURGERY DEPARTMENT

Preoperative Protocol

PERIODIC REVIEW

Triennial Policy and Procedure Review

Annual Pharmacy Policy and Procedure Manual

Quality and Patient Safety Council Report - August 2014

Quality and Patient Safety Council Report - September 2014

Welcome Medical Staff...



Iman Afrooz, MD
Internal Medicine



Robert Slay, MD
Emergency Medicine



Rindha Reddy, MD
Ophthalmology



Chad Sparks, MD
Internal Medicine



Julie Santelli, MD
Radiation Therapy



Gretchen Andersen, PA-C
Surgical Assistant

FAREWELLS

Teresa Duran, MD (Pathology)
Louis Smolensky, MD (Pediatrics)
Maria Vollucci, DO (Family Medicine)
Leland Whitson, MD (Gynecology)



Providence Little Company of Mary Medical Center Torrance

December 2014 Medical Staff Calendar

	Monday	Tuesday	Wednesday	Thursday	Friday
1		2 7:00 Cardiac Surgery Conference	3 7:15 Breast Cancer Conference 7:45 Cancer Conference	4	5 12:30 Cardiac Conference
8 12:30 New Medical Staff Member Orientation	9 7:00 Cardiac Surgery Conference 12:30 Cardiology Quality Review	10 7:15 Breast Cancer Conference 7:45 Cancer Conference	11		12 12:30 Cardiac Conference
15	16 7:00 Cardiac Surgery Conference	17 7:15 Breast Cancer Conference 7:45 Cancer Conference	18		19 12:30 Cardiac Conference
22	23 7:00 Cardiac Surgery Conference	24 7:15 Breast Cancer Conference 7:45 Cancer Conference	25		
29	30 7:00 Cardiac Surgery Conference	31			

FEATURED ART PIECE



GALEN

The Founder of Modern Medicine

Created and Donated by Edward Weisenheimer, MD

Galen of Pergamon was a prominent Greek physician, surgeon, and philosopher in the Roman empire. Arguably the most accomplished of all medical researchers of antiquity, Galen influenced the development of various scientific disciplines, including anatomy, physiology, pathology, pharmacology, and neurology, as well as philosophy and logic.

DID YOU KNOW...

On January 27, 1979, a new, four-story wing was dedicated, bringing the hospital's total bed capacity to 263. The addition included an acute observation unit, ob-gyn unit with delivery, nursery and post-partum areas, and an intensive care and cardiac care unit. By the way, 80 of our Medical Staff Physicians were born after 1979.

