

President of the Professional/Medical Staff REPORT

Thomas E. Lowe, M.D.

Healthcare Takes a Village

The rapid change in healthcare will require strange bedfellows. The cost of healthcare has concentrated efforts to improve efficiency of our healthcare system by trying to improve quality of care while at the same time controlling and reducing cost. The success of our healthcare system in the South Bay will be judged based on quality and cost metrics which will be publically available.

Medicare and other payers continue to decrease reimbursements to hospitals and physicians alike but expect improved care. Despite financial pressures, we physicians must come to the table with our hospitals and payer partners in healthcare to understand that the greatest cost in healthcare remains acute care hospitalizations. Avoidable hospitalizations remain the most appropriate target of our efforts. Payers, medical practices and hospitals need to jointly support services for primary care and specialty physicians, same day appointments, improving urgent care support and decompressing the emergency rooms, decreased latency to care and focusing on preventative medicine.

Please see Healthcare Takes A Village page 2

IN THIS ISSUE

- 1 President of the Professional Staff Report
- 2 Healthcare Takes a Village continued
- 3 James Mollenkamp, MD Cystoscopy Room
- 4 Board Approvals
- 5 Welcome Medical Staff /Farewells
- 6 Physician of the Quarter
- 7 May Calendar
- 8 June Calendar

Thomas E. Lowe, MD
President of Professional Staff

Michele Del Vicario, MD
Immediate Past-President

Midhat Qidwai, MD
President-Elect

Richard Glimp, MD
Chief Medical Officer

William A. Conrad, MD
Secretary/Treasurer

Celia Hogenson-Kida, MBA, CPMSM
Director, Medical Staff Services

Healthcare Takes A Village

Continued from page 1

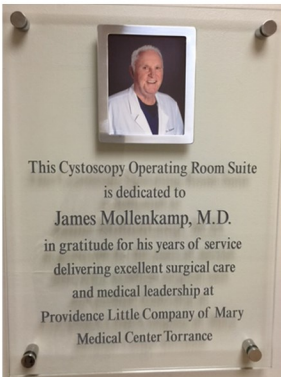
Data supports that medical homes and patient-centered specialty practices (NCQA certifications) can markedly decrease overall cost to the healthcare system. The largest cost avoidance is seen preventing complications of disease and rescuing patients before requiring acute care. The resources needed to provide this high level care require substantial financial investment but the cost is far outweighed by the savings to the system.

A “medical village” is the ultimate goal as a medical system and attainable only if payers understand the financial resources needs to implement this system and will not be attainable without adequate support. Medicare has just recently started to reimburse such planned services (Chronic Care Management) and soon with certain specialties (Oncology Care Model). These reimbursements will be later based on actual quality-cost results.

I am cautiously hopeful that we can all work together for our mutual success in the care of our patients if we can convince payers that we will all sink or swim together. We physicians must take an active role in helping implement the medical home/village model with this support.



Blessing and Dedication of the JAMES MOLLENKAMP, MD Cystoscopy Operating Room Suite



“God of mercy and all consolation, you shower your love and blessing in a particular way on those who are in distress, on the sick, and on those who assist and minister to the sick in any way. We ask you to be present with us this afternoon as we bless the James Mollenkamp, MD Cystoscopy Operating Room Suite. Through the work of our hands and the help of technology we cooperate with the Creator to improve the earth as the dwelling place of the human family. By our efforts to bring the work of creation to perfection, we contribute to the advancement of the healing process and the Divine call to serve one another in love and compassion.



May God, the Father of all goodness, who commanded us to help one another as sisters and brothers, bless this newly dedicated Cystoscopy Operating Room Suite and bless those who serve in this surgery department. May they find joy in contributing to the well-being and progress of the earthly city of God. We ask of your blessing upon our patients who will benefit from this new place of care, that it might help them in their healing journey. We ask this in Your holy name.”

*Blessing of the James Mollenkamp Cystoscopy Room
by Paul Makarewicz, Director Mission Leadership*



DEDICATION BY ARTIST SHMAVON SHMAVONYAN

Armenian artist Shmavon Shmavonyan donated a valuable canvass entitled *Dancing Fairies* to Providence Little Company of Mary Torrance. The painting can be viewed on the first floor of the Del E. Webb Center for Health Education.



Approved at February 18, March 22, & April 21 Board

POLICIES AND PROCEDURES

CRITICAL CARE P&Ps

- Code Blue Policy (revision as of January 6, 2016)
- Daily Crash Cart and Defibrillator Checklist
- Crash Cart Contents (revision)
- Inclusion and Exclusion for Therapeutic Hypothermia
- Code Blue Documentation Record
- Post Code Blue Debrief

GENERAL P&Ps

- Management of Clinical Standards

HEALTH INFORMATION P&Ps

- Medical Records Abbreviation List, Approved (Revised to add CUPID procedure abbreviations)

MEDICINE DEPARTMENT P&Ps

- Heart Express (revised)

INFECTION & BLOOD P&Ps

- Infection Control for Unused Nutritional Supplements (new)
- Antiseptic/Disinfectant/General Use Product Registry (new)

OB/GYN DEPARTMENT P&Ps

- Ambulation in Labor (also approved by Department of Anesthesia)
- Safe Sleep (new)

PHARMACY & THERAPEUTICS P&Ps

- Transport of Patients with Controlled Substance Infusions (new)
- Medication Management - Revisions
- IV to PO Interchange for Antibiotics
- Look-Alike/Sound-Alike Drugs
- Local Therapeutic Interchanges
- High-Risk/High-Alert and Hazardous Med Mgmt
- Cervical Ripening (revised)
- Nutrition Screening (revised)
- Antibiotics - Formulary Restrictions (revised SB Community, no changes)
- IV to PO Interchange of Non-Antibiotics (revised SB Community, no changes)

PHYSICIAN EXCELLENCE COUNCIL P&Ps

- Central Line Management

FORMS

ANESTHESIOLOGY

- Anesthesia Consent (revision)

GENERAL

- System TeleHealth Sharing Agreement

SURGERY DEPARTMENT

- Cardiovascular Surgery Privilege Form (revision of procedure name: Cox/Maze III Procedures Utilizing Microwave or Radiofrequency Ablation)

PERIODIC REVIEW

CLINICAL DIETETICS:

- (Annual Review of Diet Manual - no changes)
- Nutrition Care Manual 2014 and addendums (On-Line)

INFECTION & BLOOD:

- Infection Prevention Program Plan 2016
- Infection Prevention Annual Risk Assessment, Program Effectiveness and Goals 2016

PERFORMANCE IMPROVEMENT:

- Improving Organizational Performance and Patient Safety Plan 2016

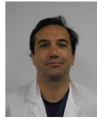
PHARMACY & THERAPEUTICS:

- Medication Error Reduction Plan Annual Review - 2016 (includes items identified for closeout)

Welcome Medical Staff...



Olcay AKSOY, MD
Cardiology



Reza ASKARI, MD
Obstetrics & Gynecology



Antonio BONET, MD
Pulmonary/Critical Care



Sandy CHO, MD
Internal Medicine



Mona COLIANNO, DO
Emergency Medicine



Omer DEEN, MD
Internal Medicine



Abey GASKE, MD
Urology



Mitchell R. GOLDSTEIN, MD
Neonatology



Jungok HA, NP
Palliative Care



Tiffany JOHNSON, NP
Emergency Medicine



Amer KHAN, MD
Internal Medicine



Amr KOUCHOUK, MD
Ophthalmology



Mimi LEE, MD
Neurology



Amber LEONARD, NP
Emergency Medicine



Uchenna OGBOZOR, MD
Neonatology



Olga OLEVSKY, MD
Hematology/Oncology



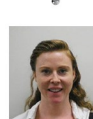
Jessica RAMIREZ, MD
Pediatrics



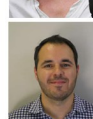
Randy RANDEL, MD
Neonatology



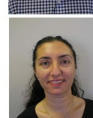
Edward RANZENBACH, PA-CV
Cardiovascular Surgery



Tiffany SCHAFFER, PA-C
Cardiovascular Surgery



Richard SPAULDING, DDS
Pediatric Dentistry



Taraneh TEHRANI, MD
Internal Medicine



Aaron TRAN, MD
Internal Medicine



Ronald TSAO, MD
Pediatrics



Yuliya TURIY, MD
Pediatric Cardiology



Aleksandra ZABROCKI, MD
Neonatology

PHYSICIAN of the QUARTER

LCU/PCU/1st Overflow

The Nurses at Luminary and Progressive Care Units have just initiated the Physician of the Quarter award, with Dr. Kasey Lai as their first ever awardee. They wanted to recognize Physicians who have positively impacted nurses in the LCU and PCU. So far, the feedback from both Nurses and Doctors have been positive. It is their hope that continued physician recognition by nurses will encourage positive relationships and facilitate improved patient care within their units.

Here are some comments from our nurses at the LCU/PCU:

"He responds to calls very fast, and you better have your information ready!"

"He is a very intelligent physician. Very knowledgeable of his patients and their needs. I like working with him."

"He takes the time to listen when we have questions, making sure we provide great care to everyone."

"I like that he makes me critically think. I feel like I learn a lot when I have his patients."

"I admire his high level of professionalism."

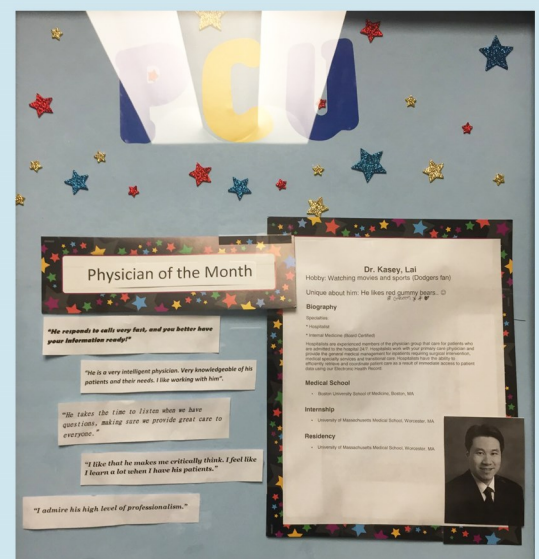


Kasey Lai, MD

Kasey Lai, MD is an Internal Medicine Hospitalist with Providence Medical Associates. He has been with Providence Little Company of Mary Torrance since 2008.

Medical School: Boston University

Internship/Residency: University of Massachusetts




June 2016

Sunday	Monday	Tuesday	Wednesday	Thursday	Friday	Saturday
			1 7:15a-Breast Cancer Conference 7:45a-CancerConference 12:30p-Critical Care	2 12:30p-Continuing Medical Education: PEDS- Pediatric GI Problems	3 12:30p- Cardiac Conf.	4
5	6 7:00a-Cardiac Surgery Conference 1:30p- EDIE Committee 5:00p-Statement. of Concern 6:00p-Medical Executive	7 7:00a-Cardiac Surgery Conference 1:30p-Ob/Gyn Dept. Therapeutics Committee 12:30 p-Cardiology Quality Review 12:00p-Comprehensive Stroke Conference	8 7:15a-Breast Cancer Conference 7:45a-CancerConference	9 12:30p-Continuing Medical Education: Adult Spinal Surgery	10 12:30p- Cardiac Conf.	11
12	13 7:00 a- Anesthesia Dept. 12:30 pm- New Medical Staff Orientation	14 7:00a-Cardiac Surg. 12:30p-Ob/Gyn Dept. Therapeutics Committee 12:30 p-Cardiology Quality Review 12:00p-Comprehensive Stroke Conference	15 7:15a-Breast Cancer Conference 7:45a-CancerConference 12:30p-Medical Quality Review	16	17 12:30p- Cardiac Conf.	18
19	20 7:00 a-Endovascular Committee	21 7:00a-Cardiac Surgery Conference 12:30p-Infection Prevention/ Blood	22 7:15a-Breast Cancer Conference 7:45a-CancerConference	23 12:30p-Continuing Medical Education: Digital Information/Digital Physicians	24 12:30p- Cardiac Conf.	25
26	27 7:00 a-Surgery Quality Review	28 7:00a-Cardiac Surgery Conference 12:30p-Cardiology Sub-section 12:30 pm -RN/MD interdisciplinary Meeting	29 7:15a-Breast Cancer Conference 7:45a-CancerConference 3:30p-Physician Excellence Committee	30		

FINAL 02/19/2016 -- please note that all meetings held in Center of Health Education - **Highlighted are the CME**, Category I approved meetings -- see back for description and all meetings are subject to change. **October 2015 P&T moved to 2nd Tuesday of the month.** **Family Medicine to 3rd Wednesday As of October 2015 - Pharmacy and Therapeutics Committee moved to 2nd Tuesday of the month and as of 12/04/15 - PEC at 3:30 pm**

July 2016

Sunday	Monday	Tuesday	Wednesday	Thursday	Friday	Saturday
					1 12:30p- Cardiac Conf.	2
3	4 Happy July 4th! 	5 7:00a-Cardiac Surgery Conference 12:30 p-Institutional Rev 3:00p- EDIE Committee 5:00p-State of Concern 6:00p-Medical Executive	6 7:15a-Breast Cancer Conference 7:45a-Cancer Conference 12:30p-Critical Care	7 12:30p- Pediatrics Dept. 12:30p-Continuing Medical Education:	8 12:30p- Cardiac Conf.	9
10	11 7:00 a- Anesthesia Dept. 12:30 pm- New Medical Staff Orientation 12:30p- Medicine Dept.	12 7:00a-Cardiac Surgery Co. 7:00a - Physician Well 12:30p-Ob/Gyn Dept. 12:30 p-Cardiology QR 12:00p-Comprehensive Stroke Conference 12:30p- Pharmacy & Therapeutics Committee	13 7:15a-Breast Cancer Conference 7:45a-Cancer Conference	14 7:30a-Radiology Dept. 12:30p-Continuing Medical Education:	15 12:30p- Cardiac Conf.	16
17	18 12:30p-Utilization Review	19 7:00a -Bariatric Surgery 7:00a-Cardiac Surgery Conference 12:30p-Emergency Medicine Dept.	20 7:15a-Breast Cancer Conference 7:45a-Cancer Conference 12:30p-Medical Quality Review	21	22 12:30p- Cardiac Conf.	23
24	25 7:00 a-Surgery Quality Review 12:30 pm- General Professional Staff	26 7:00a-Cardiac Surgery Conference 12:30p-Cardiology Sub-section 12:30 pm -RN/MD interdisciplinary Meeting	27 7:15a-Breast Cancer Conference 7:45a-Cancer Conference 3:30p-Physician Excellence Council	28 12:30p-Continuing Medical Education: 12:30p-Post Acute Care	29 12:30p- Cardiac Conf.	30
	31					

FINAL: 05/09/2016 – please note that all meetings held in Center of Health Education – **Highlighted are the CME**; Category I approved meetings – see back for description and all meetings are subject to change. **October 2015 P&T moved to 2nd Tuesday of the month. Family Medicine to 3rd Wednesday As of October 2015 - Pharmacy and Therapeutics Committee moved to 2nd Tuesday of the month and as of 12/04/15 - PEC at 3:30 pm**