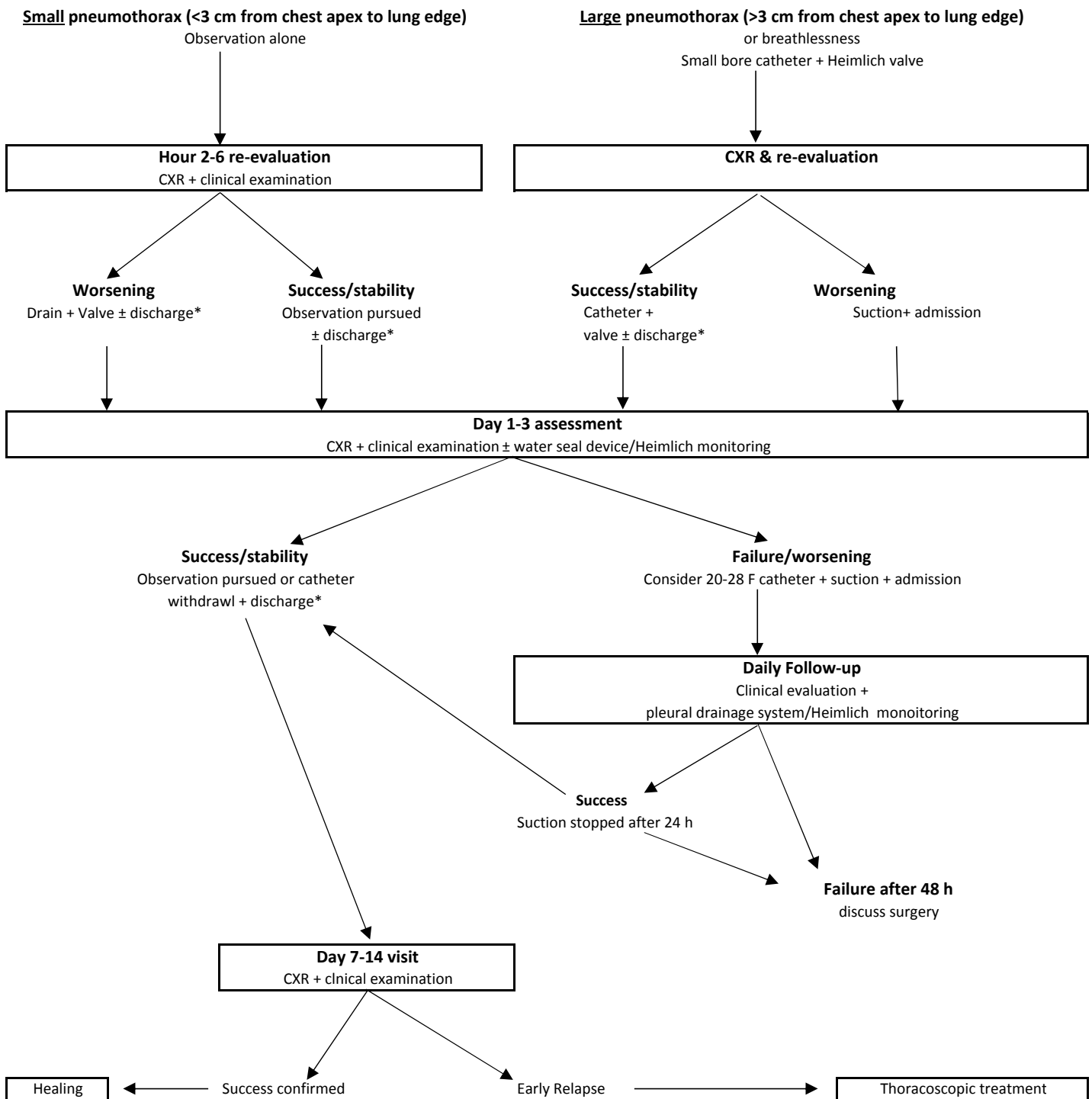


## First Episode of Primary (No underlying lung disease) Spontaneous Pneumothorax (PSP)



### \*Discharge criteria

1. Patient stable
2. Lives within 1 hr travel time
3. Patient does not live alone
4. Patient understands & can implement instructions

Modified from Massongo M, et al. Eur Respir J 2014;43:582-90.

## **Primary Spontaneous Pneumothorax Management**

Participants: thoracic surgery, emergency medicine, thoracic radiology 4/16

### **Principles:**

Avoid unnecessary pain/admission/procedures for patients

Stable small pneumothoraces do not need chest tube

If pt with questionable home situation, pain or anxiety, ok to admit even without chest tube

Early identification of patients who would benefit from thoracoscopy

### Key References:

Aguinagalde et al. Percutaneous aspiration vs tube drainage for spontaneous pneumothorax: systematic review & meta-analysis. *Eur J Cardiothorac Surg* 2010;37:1129-36.

Baumann et al. Management of spontaneous pneumothorax: ACCP Delphi consensus statement. *Chest* 2001;119:590-602.

Chambers, Scarci. In patients w first episode PSP is VATS superior to tube thoracostomy alone in terms of time to resolution of pneumothorax and incidence of recurrence? *Interact Cardiovasc Thorac Surg* 2009;9:1003-8.

Cho, Lee. Management of primary & secondary pneumothorax using a small bore thoracic catheter. *Interact Cardiovasc Thorac Surg* 2010;11:146-9.

Hassani B et al. Outpatient management of primary spontaneous pneumothorax in the emergency department of a community hospital using a small bore catheter and Heimlich valve. *Academ Emerg Med* 2009;16:513-8.

Kelly et al. Outcomes of emergency department patients treated for PSP. *Chest* 2008;134:1033-6.

Kheng KH et al. A randomized control trial comparing mini chest tube and needle aspiration in outpatient management of primary spontaneous pneumothorax. *Am J Emerg Med* 2011;29:1152-7.

MacDuff et al. Management of spontaneous pneumothorax: British Thoracic Society pleural disease guideline 2010. *Thorax* 2010;65:doi:10.1136/thx.2010.136986

Massongo M, et al. Outpatient management of primary spontaneous pneumothorax: a prospective study. *Eur Respir J* 2014;43:582-90.

Noppen et al. Manual aspiration vs chest tube drainage in first episode PSP. *Am J Respir Crit Care Med* 2002;165:1240-4.