

## President of the Professional/Medical Staff REPORT

*Michele DelVicario, MD, FACC, FRCP (C)*

As 2014 comes to a close, it is a wonderful time to reflect on our many successes we have experienced throughout the year. These are predominantly reflections...

We survived the deployment of Epic and have thrived.

Providence Little Company of Mary Torrance ministry has achieved great success and accolades. We continue to lead in patient safety and outcomes nationally and within the Providence community. Financially, we are stable and can be proud of that accomplishment. In particular, we are making great progress in our philanthropy efforts with the outstanding success of "Sellabration". We are grateful to our Foundation for making it possible, as well as our patients and their tremendous generosity throughout the year.

We are continuing to make strides in the renewing and building of our infrastructure.

Delivering quality patient care is the utmost importance and we have been recognized in several areas, in particular:

1. 50 Top Cardiovascular Hospitals award (2015)
2. Top Performer on key quality measures
3. Leapfrog Group A hospital safety score
4. Variety of excellence awards
5. Named one of the nation's "Best Hospitals"

We will strive to achieve even greater heights in the future.

As we move into 2015, I wish to express my deepest gratitude to our medical staff, caregivers, administration, and all who make our ministry a home. We should all be proud to be part of this wonderful community.

I wish you all the happiest of holidays with your loved ones and for a prosperous, healthy and happy New Year.

### IN THIS ISSUE

- 1 President of the Professional Staff Report
- 2 Dedication to Sister T
- 3 Water Feature for Sister Terrence
- 4 MEC Approvals Did you know...
- 5 Welcome Medical Staff Farewells
- 6 December Calendar
- 7 January Calendar
- 8 CME Announcement

**Michele Del Vicario, MD**  
 President of Professional Staff

**Richard Glimp, MD**  
 Chief Medical Officer

**Thomas E. Lowe, MD**  
 President-Elect

**Amir Kaviani, MD**  
 Immediate Past-President

**Midhat Qidwai, MD**  
 Secretary/Treasurer

**Celia Hogenson-Kida, MBA, CPMSM**  
 Director, Medical Staff Services



THESE HANDS  
Dedicated to Sister T

These hands, they may be old, but they are the hands of a nurturer  
Of one who has devoted her life to the care of others  
They are the hands that have provided comfort to the sick and dying

These hands, they may be old, but they are the hands of a healer  
Of one who understands that healing of the soul is more important than healing of the body  
They are the hands that help bring peace when peace is hard to find

These hands, they may be old, but they are the hands of one who is fearless  
Of one who is willing to give of herself for others  
They are the hands of one who knows a greater love

These hands, they may be old, but they are the hands of a gentle spirit  
Of one who can cradle a baby, or hold the hand of a dying man  
They are the hands that can provide strength in just the warmth of her touch

These hands, they may be old, but they are the hands of a nurse.

Lori Nolan-Mullenhour  
*Director, Women and Children's Health*





This water feature is dedicated to  
**SISTER TERRENCE LANDINI, L.C.M.**  
In Commemoration of her Diamond Jubilee  
(Service from 1953 to present)  
As a Little Company of Mary Sister

## Approved at November 25, 2014 Board

### POLICIES AND PROCEDURES

#### EMERGENCY DEPARTMENT P&Ps

Telemental Health Assessment/Referral

#### INFECTION, BLOOD AND PHARMACY P&Ps

Interpretation of Diet Orders

#### POST ACUTE CARE P&Ps

Admission Criteria for Transitional Care Beds

Resident Weights (Unintended Loss)

### FORMS

#### EMERGENCY DEPARTMENT

Physician Assistant, Emergency  
Medicine Privilege Form

Physician Assistant, Emergency  
Medicine Delegation of  
Services Agreement

#### RN/MD INTERDISCIPLINARY PRACTICE

Categories of Allied Health  
Professionals

.....

### PERIODIC REVIEW

Triennial Diet Manual Including  
2014 Update

Quality and Patient Safety  
Council Report -  
October 2014

### Did you know...

Groundbreaking for  
Little Company of Mary Hospital in Torrance  
was held on December 19, 1957.



# Welcome Medical Staff...



**Fataneh Amidi, MD**  
Obstetrics & Gynecology



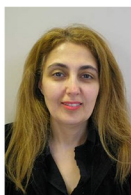
**Gopi Manthripragada, MD**  
Cardiology



**Stephanie Chan, MD**  
Dermatology



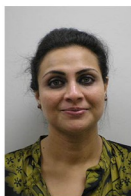
**Tim Provias, MD**  
Cardiology



**Elham Ghadishah, MD**  
Family Medicine



**Vikas Sachar, MD**  
Maternal Fetal Medicine



**Tania Ghosh, MD**  
Geriatrics



**David Smith, DDS, MD**  
Oral Surgery



**Gloria Kim, MD**  
Internal Medicine



**John Wong, MD**  
Internal Medicine



**Nikhil Madan, MD**  
Pulmonary Disease



**Natalie Wilson, NP**  
Emergency Medicine

## FAREWELLS

Mary T. Schuh, DPM (Podiatry)  
Michael H. Appy (Pathology Assistant)

Brenda Hoy, PA (CV Surgical Assist)  
Doug Raymer (Ortho Scrub Tech)





## Providence Little Company of Mary Medical Center Torrance

### December 2014 Medical Staff Calendar

	Monday	Tuesday	Wednesday	Thursday	Friday
<b>1</b>		<b>2</b> 7:00 Cardiac Surgery Conference	<b>3</b> 7:15 Breast Cancer Con- ference	<b>4</b>	<b>5</b> 12:30 Cardiac Conference
<b>8</b>	12:30 New Medical Staff Member Orientation	<b>9</b> 7:00 Cardiac Surgery Conference 12:30 Cardiology Quality	<b>10</b> 7:15 Breast Cancer Con- ference 7:45 Cancer Conference	<b>11</b>	<b>12</b> 12:30 Cardiac Conference
<b>15</b>		<b>16</b> 7:00 Cardiac Surgery Conference	<b>17</b> 7:15 Breast Cancer Con- ference 7:45 Cancer Conference	<b>18</b>	<b>19</b> 12:30 Cardiac Conference
<b>22</b>		<b>23</b> 7:00 Cardiac Surgery Conference	<b>24</b> 7:15 Breast Cancer Con- ference 7:45 Cancer Conference	<b>25</b>	<b>26</b>
<b>29</b>		<b>30</b> 7:00 Cardiac Surgery Conference	<b>31</b>		

# January 2015

Sunday	Monday	Tuesday	Wednesday	Thursday	Friday	Saturday
				1 New Year's Day	2 12:30p- Cardiac Conf.	3
4	5 12:30p- Medicine Dept.	6 7:00a-Cardiac Surgery Conference 12:30p-Institutional Rev. Concern 5:00p-Statement of Concern 6:00p-Medical Executive	7 7:15a-Breast Cancer Conference 7:45a-Cancer Conference 12:30p-Critical Care	8 12:30p- Pediatrics Dept. 12:30p-Continuing Medical Education: Cardiology guidelines Update	9 12:30p- Cardiac Conf.	10
11	12 7:00 a- Anesthesia Dept. 12:30 pm- New Medical Staff Orientation	13 7:00a-Cardiac Surgery Conference 12:30p-Ob/Gyn Dept. Quality Review	14 7:15a-Breast Cancer Conference 7:45a-Cancer Conference	15 7:30a-Radiology Dept (?) 12:30p-Continuing	16 12:30p- Cardiac Conf.	17
18	19 Martin Luther King, Jr. Day	20 7:00a-Cardiac Surgery Conference 12:30p-Emergency Medicine Department 12:30p-Infection, Blood and Pharmacy	21 7:15a-Breast Cancer Conference 7:45a-Cancer Conference 12:30p-Medical Quality Review	22 12:30p-Post Acute Committee 12:30p-Continuing Medical Education: Hepatic Metastasis	23 12:30p- Cardiac Conf.	24
25	26 7:00 a-Surgery Quality Review 12:30 pm- General Professional Staff	27 7:00a-Cardiac Surgery Conference 12:30p-Cardiology Sub-section 12:30 pm -RN/MD interdisciplinary Meeting	28 7:15a-Breast Cancer Conference 7:45a-Cancer Conference 12:30p-Physician Excellence Committee 12:30p-Radiology Quality Review.???	29	30 12:30p- Cardiac Conf.	31

*Providence Little Company of Mary Medical Center Torrance  
Presents*

**Thursday CME Conference**

**Conference Date:**        *Thursday, January 8, 2015*

**Conference Topic:**        *Cardiology Guidelines Update*

***SPEAKER:***        *Nazanin Azadi, MD  
Interventional Cardiologist  
Providence Little Company of Mary Medical Center Torrance*

**NEED:**        New cardiology guidelines relating to cardiac patients having non-cardiac surgery have been released by the American College of Cardiology. The HEC approved this topic as CME presentation

**OBJECTIVES:**

1.        Apply the latest cardiology guidelines to improve overall morbidity and mortality rates;
2.        Identify guidelines for operative evaluation of cardiovascular patients undergoing noncardiac surgery;
3.        Describe practice changes to improve care for patients with obesity and heart disease;
4.        Discuss cultural diversity issues in risk, incidence, prevalence, disease burden, or mortality associated with cardiac patients and/or cultural disparities in access, diagnosis and/or less adherence to treatment regimens;

**TARGET AUDIENCE:** This activity has been designed to meet the educational needs of cardiologists, interventional cardiologists, thoracic surgeons, general surgeons, radiologists, family practice physicians and general medical staff, nursing staff and allied health staff

\*\*\*\*\*

**LOCATION:**    **DEL E. WEBB MEMORIAL CENTER FOR HEALTH EDUCATION**

**TIME:**        **12:00 Noon – Buffet Lunch        12:30 P.M. – Conference Begins**

Providence Little Company of Mary Medical Center Torrance is accredited by the Institute for Medical Quality/California Medical Association (IMQ/CMA) to provide continuing medical education for physicians. Providence Little Company of Mary Medical Center Torrance takes responsibility for the content, quality and scientific integrity of this CME activity. Providence Little Company of Mary Medical Center Torrance designates this educational activity for a maximum of one (1) hour of *AMA PRA Category 1 Credit(s)*<sup>TM</sup>. Physicians should only claim credit commensurate with the extent of their participation in the activity. This credit may also be applied to the CMA Certification in Continuing Medical Education.

